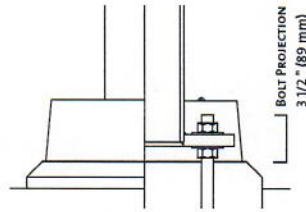
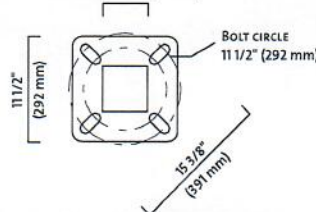


Base details



SPS5

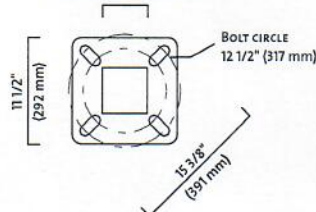
WIREWAY 4 1/2" (114 mm)



B.C. from: 10 1/2" to 12" (267 to 305 mm)

SPS6

WIREWAY 5 1/2" (140 mm)



Comes with 4 anchor bolts, 8 nuts and 8 washers.

B.C. from: 11 1/2" to 12 3/4" (292 to 324 mm)

Specifications:

Pole: made from a one-piece, 5" or 6" square (127 mm or 152 mm) tube of high-tensile carbon steel, sealed by a rolled and flattened vertical weld seam, welded to both the top and bottom of a steel anchor plate.

A 2" by 4 1/2" (51 by 114 mm) maintenance opening is complete with cover and copper ground lug.

Base cover: square base cover made from two pieces of formed aluminum mechanically fastened to the base with stainless steel hardware.

Finish: See page 142 for Finish details.

Options:

- DE:** Pole buried 5' (1524 mm) in the ground (see page 133)
- LS:** Provision for loudspeaker outlet (see page 132)
- PH7:** Button-type photoelectric cell (specify operating voltage)
- PH8:** Quarter-turn type photoelectric cell (specify operating voltage)
- DR:** Duplex receptacle (120V line voltage only)
- GFI:** DR with common ground fault interrupter (120V line voltage only)
- BA:** Banner arm (see page 136)
- PS:** Plant support (see page 137)
- MPL:** Mid-pole luminaire

Note: The recommended method for calculating EPA (Effective Projected Area) is in accordance with AASHTO 2001 standards: for three seconds, the pole is tested in wind gusts equivalent to the strongest winds on record over the past 50 years, and with a 50 pound load (22.7 kg) placed at 1 foot (305 mm) above its center.

CATALOG NUMBER	NOMINAL HEIGHT		TENON SECTION		WALL THICKNESS		WEIGHT		EPA RATING				ANCHOR BOLTS	
	ft	m	in	mm	in	mm	lbs	kg	90 MPH	110 MPH	120 MPH	150 MPH	in	mm
SPS5D-15	15	4.57	5	127	0.120	3.0	138	63	30	30	30	18.91	1-36	25-914
SPS5J-15	15	4.57	5	127	0.180	4.5	202	92	30	30	30	28.64	1-36	25-914
SPS5V-15	15	4.57	5	127	0.250	6.4	257	117	30	30	30	30	1-36	25-914
SPS5D-18	18	5.49	5	127	0.120	3.0	170	77	30	25.28	20.84	12.49	1-36	25-914
SPS5J-18	18	5.49	5	127	0.180	4.5	220	100	30	30	30	19.12	1-36	25-914
SPS5V-18	18	5.49	5	127	0.250	6.4	312	142	30	30	30	23.6	1-36	25-914
SPS5D-20	20	6.10	5	127	0.120	3.0	185	84	30	20.22	16.72	10.09	1-36	25-914
SPS5J-20	20	6.10	5	127	0.180	4.5	244	111	30	29.99	24.92	15.34	1-36	25-914
SPS5V-20	20	6.10	5	127	0.250	6.4	344	156	30	30	30	19.83	1-36	25-914
SPS5D-25	25	7.62	5	127	0.120	3.0	224	102	19.15	12.52	10.38	6.31	1-36	25-914
SPS5J-25	25	7.62	5	127	0.180	4.5	328	149	28.05	18.48	15.4	9.54	1-36	25-914
SPS5V-25	25	7.62	5	127	0.250	6.4	422	192	30	24.85	20.75	12.7	1-36	25-914
SPS5J-30	30	9.14	5	127	0.180	4.5	388	176	18.85	12.47	10.38	6.47	1-36	25-914
SPS5V-30	30	9.14	5	127	0.250	6.4	500	227	25.22	16.72	13.97	7.52	1-36	25-914
SPS6J-25	25	7.62	6	152	0.180	4.5	407	185	30	26.92	21.96	12.08	1-36	25-914
SPS6V-25	25	7.62	6	152	0.250	6.4	449	204	30	27.61	22.45	12.29	1-36	25-914
SPS6J-30	30	9.14	6	152	0.180	4.5	464	210	29.67	18.44	14.54	6.76	1-36	25-914
SPS6V-30	30	9.14	6	152	0.250	6.4	597	271	30	18.91	14.87	6.88	1-36	25-914
SPS6J-35	35	10.67	6	152	0.180	4.5	555	252	21.02	12	8.87	2.56	1-36	25-914
SPS6V-35	35	10.67	6	152	0.250	6.4	639	290	21.82	12.33	9.07	2.6	1-36	25-914

Note: Philips Lumec reserves the right to modify the above details to reflect changes in the cost of materials and/or production and/or design without prior notice.